

Swiss TPH



Swiss Tropical and Public Health Institute
Schweizerisches Tropen- und Public Health-Institut
Institut Tropical et de Santé Publique Suisse

Department Epidemiology & Public Health



For me. For all.
Swiss health study



Für mich. Für alle.
Schweizer Gesundheitsstudie



Pour moi. Pour tous.
Étude suisse sur la santé



Per me. Per tutti.
Studio svizzero sulla salute

Prof. Dr. Nicole Probst-Hensch
Head Departement Epidemiology & Public Health
Scientific Lead, Swiss Health Study

Swiss Health Study

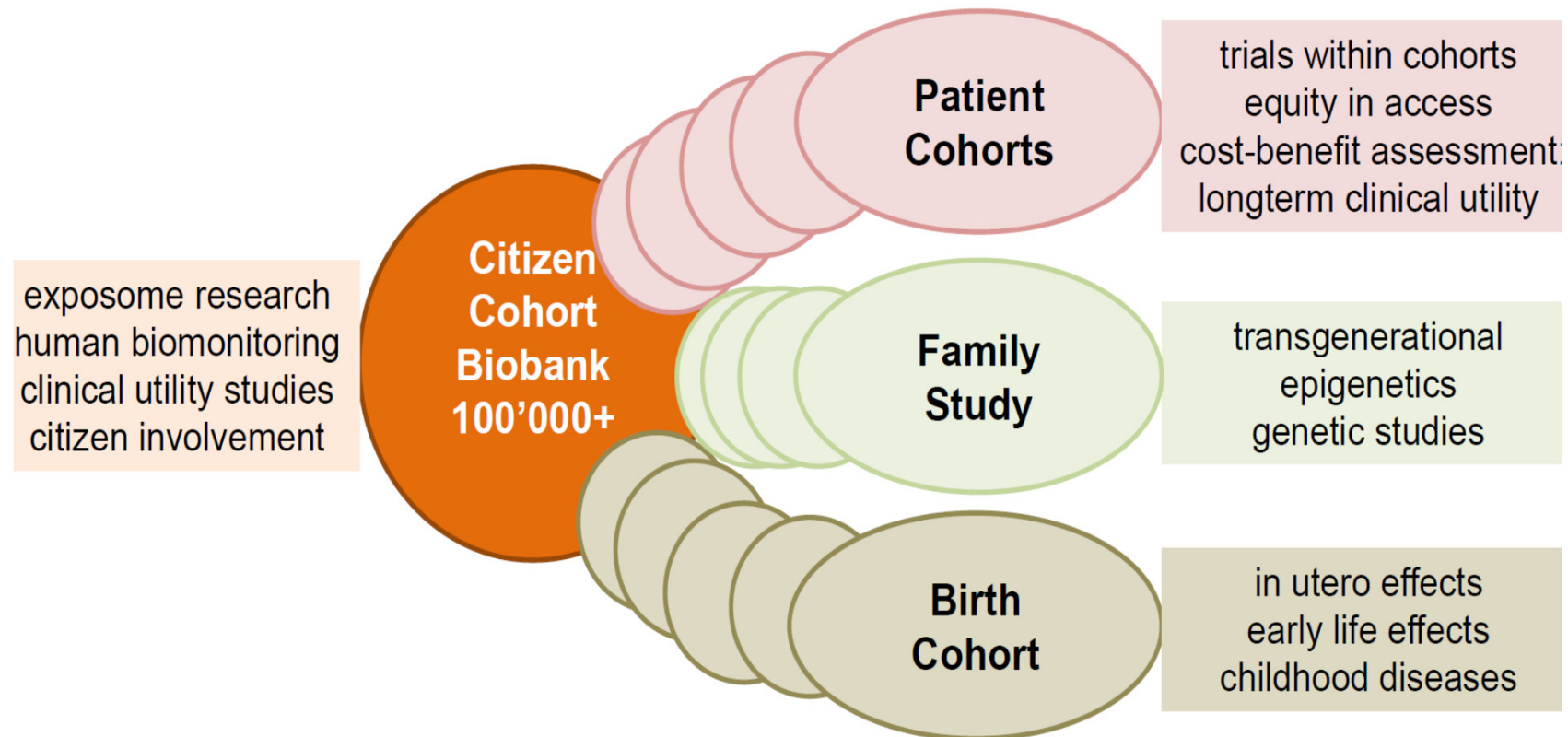


Core Aspects

- Swiss-wide
- 100'000+ citizens
- Age 20-69
- Interview – (deep) phenotyping – biological sampling
- Interdisciplinary collaboration
- Start: ≥ 2021
- Duration: > 10 years / ≥ 2 follow-ups / sub-studies

Expandable Study Design

for research and policy



Benefit and Aims



Benefit and Aims – Mega-Cohorts in General

- What are modifiable risk patterns for common chronic diseases, multimorbidity, and accelerated aging – how to they act – what is keeping people well?
- What are causes for geographical and sociodemographic inequities in health and well being ?
- What types personalized health interventions are
 - accepted and sustainably used
 - of utility for risk prediction and screening
 - cost-effective
 - accessible

Benefit and Aims – a Mega-Cohort in Switzerland

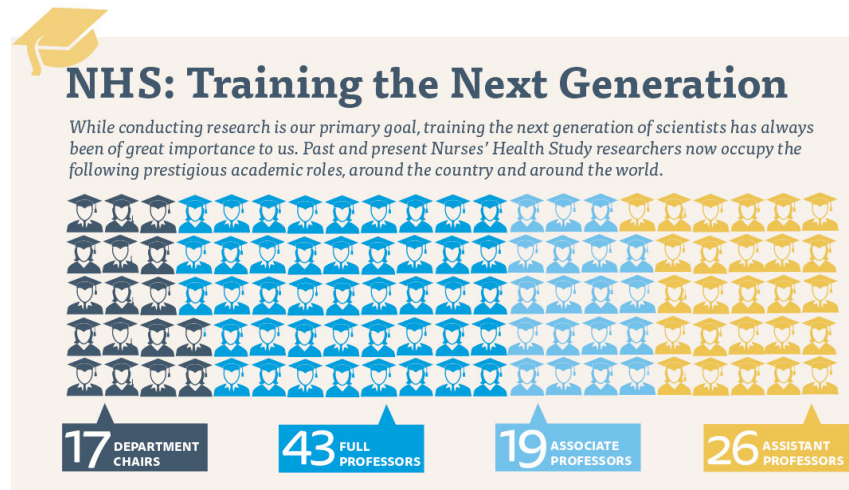
- Engagement of citizens in research

Friends of the Nurses' Health Study

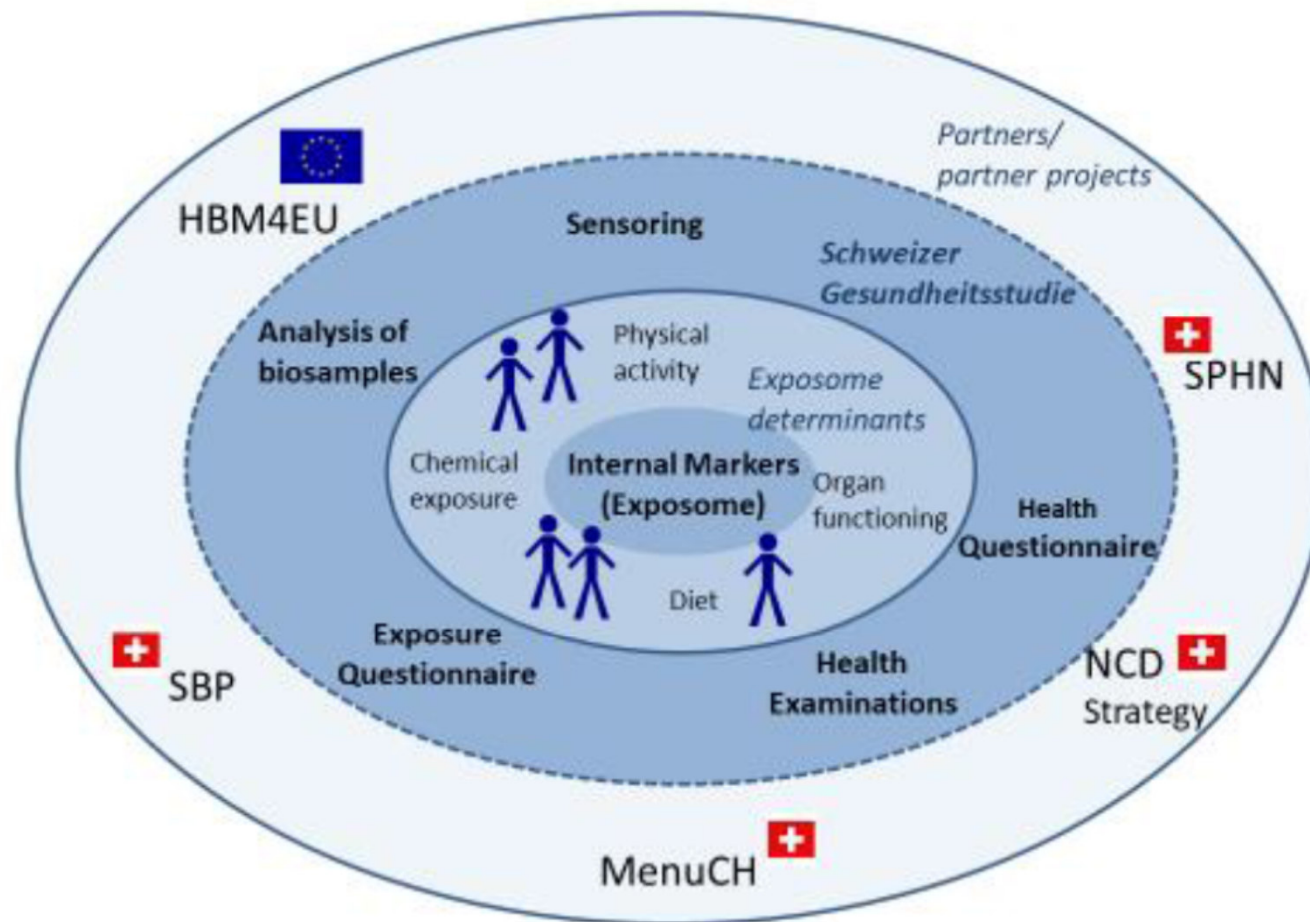
Over the years, many participants and their families have asked how they might help support the NHS and NHS II, beyond the wonderful and generous donation that all participants make of their time and energy. We are deeply grateful for the expressions of support and for donations made to the Friends of the Nurses' Health Study Fund, especially in view of the constraints of federal support for research.

If you wish to make a donation, please contact us at the address below. Alternatively, please call us at 617-525-2258 or visit www.nurseshealthstudy.org and click the "Donations" link. Donations and bequests help sustain our ongoing research.

- Swiss-specific (health) policy context
- Access to international data/biosamples as strong partner
- Control data/biosamples for patient cohorts
- Career promotion in different domains



National and International Embedding



«The healthy citizens gap»

? Health Citizens ?

Bench



Bedside

NIH All of Us Research Program

**The future of
health begins with
All_{of}Us**

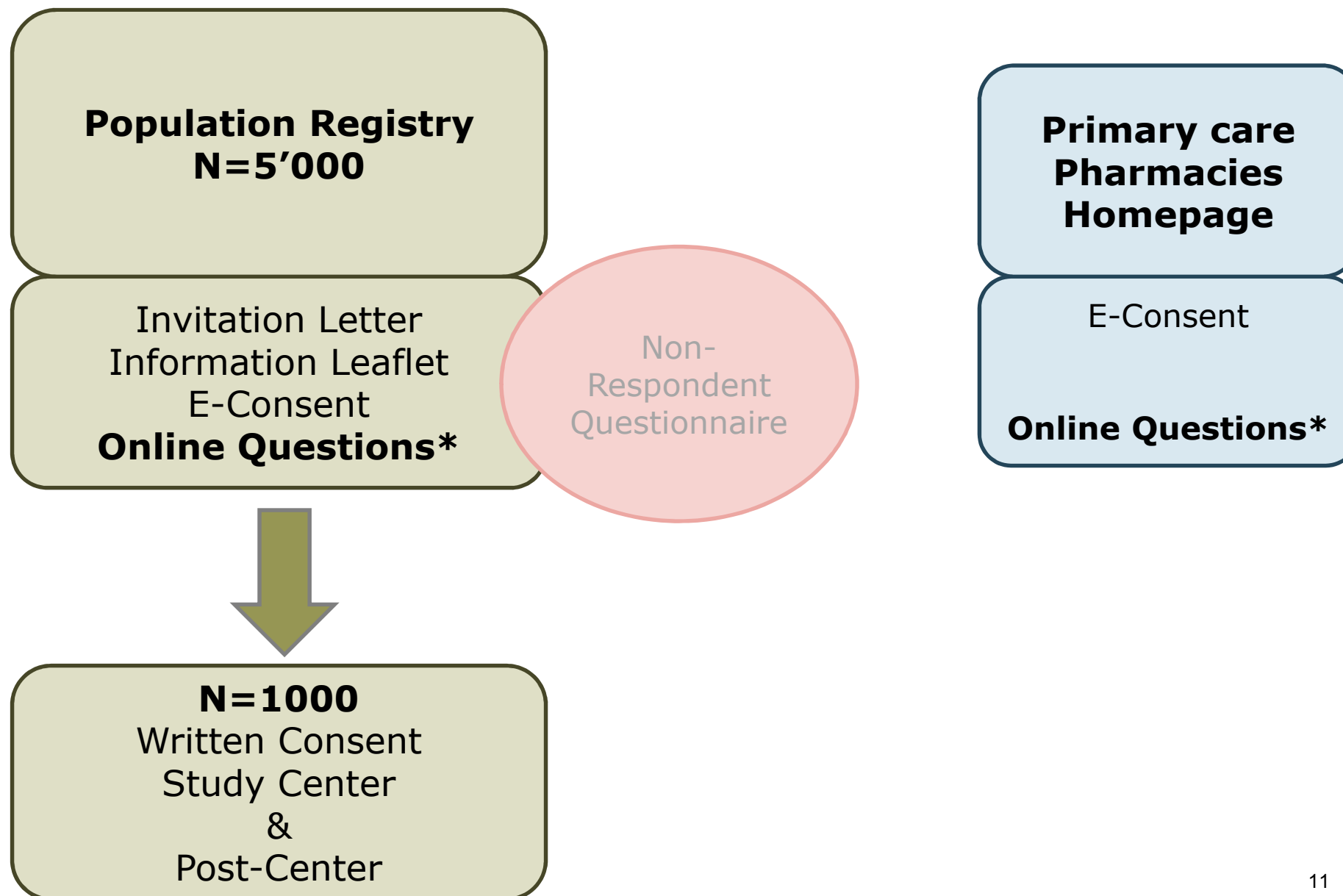


- Historic effort to gather data from one million or more people in the U.S.
- Focus on individual differences in lifestyle, environment, and biology
- Paving the way toward precision medicine

Swiss Health Study – Pilot Phase



Recruitment – BS/BL & VD



Online Questionnaire – all - >>1000

Evaluation of attitude towards health research

Health: symptoms; diseases; medication; service use

Lifestyle, social and physical environment

Quality of life

Study Center Visit – 500 BS/BL – 500 VD

Study Information & Written Consent

Anthropometric assessment

Blood pressure, lung function, hand grip strength

Morning urine at home before center visit (human biomonitoring) Urine in study center – point-of-care testing

Venous blood

Capillary blood - point-of-care testing

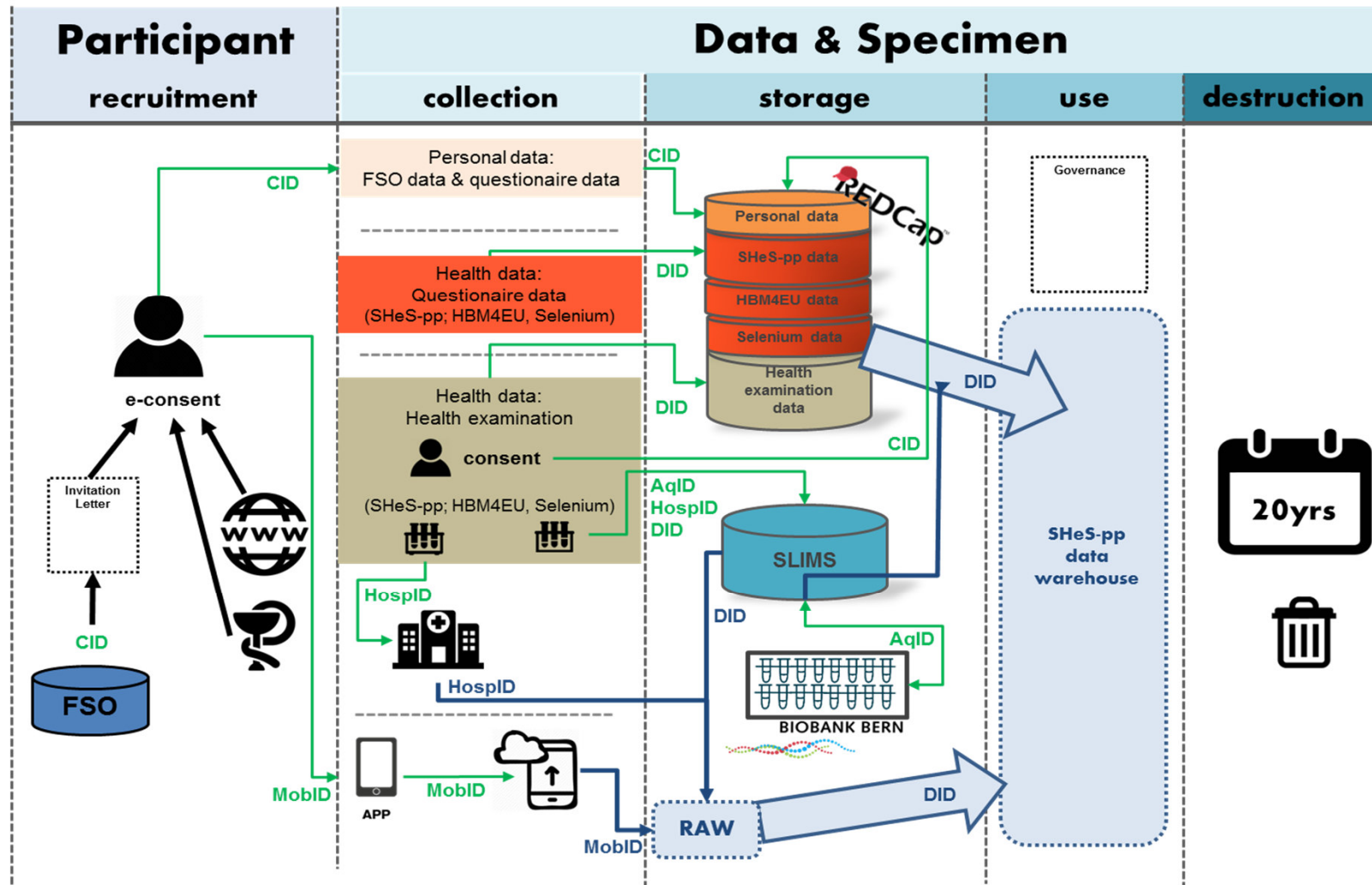
Interview incl. chemical exposures Discussion of point-of-care results

Post-center

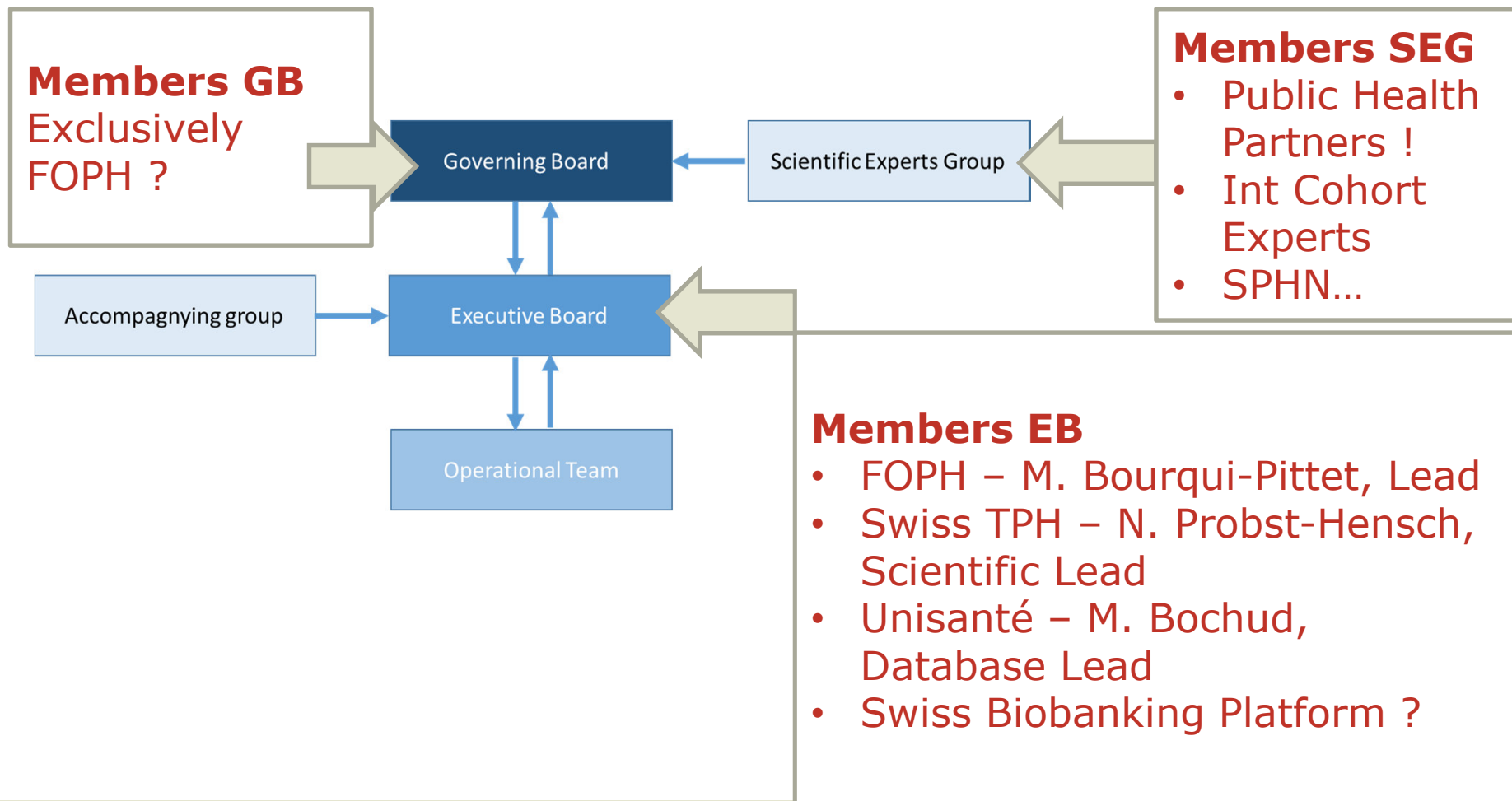
Accelerometry

Taking photos of food – My-Food-Repo

IT and Biobank Infrastructure



Governance – Draft Ideas



Challenges



- Conflicting opinions on aspects of data protection and governance by federal data protection office, local data protection office and federal office of justice
- Leading role of academic public health institutions !!

Take Home Message

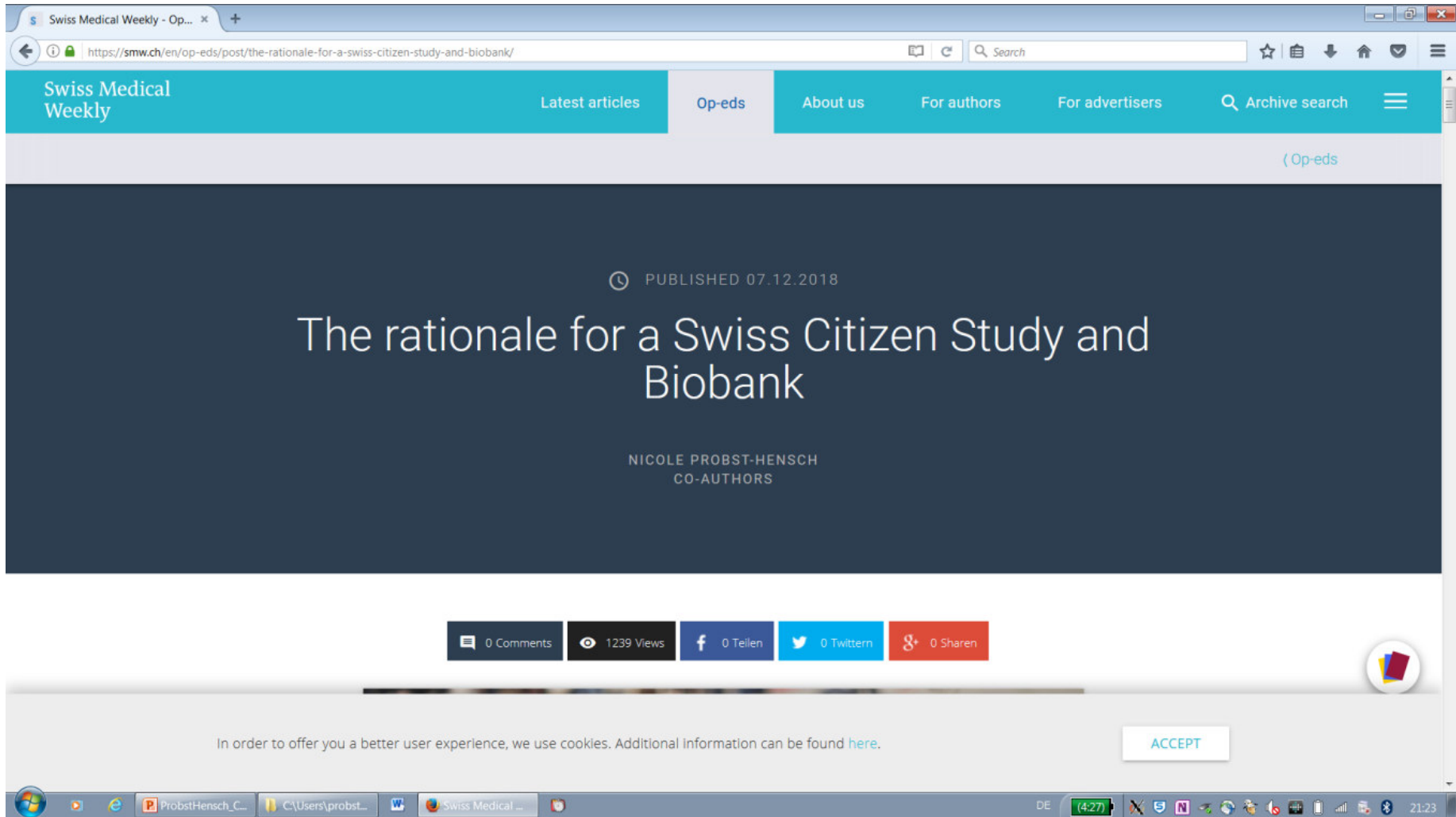
Building the cohort

Collaboration
national
international

We-Too
a must
at eye level

Using the cohort data

Competition
national
international



The screenshot shows a web browser window with the address bar displaying <https://smw.ch/en/op-eds/post/the-rationale-for-a-swiss-citizen-study-and-biobank/>. The page header includes the "Swiss Medical Weekly" logo and navigation links: "Latest articles", "Op-eds", "About us", "For authors", "For advertisers", and "Archive search". A teal navigation bar contains the text "(Op-eds)".

The main content area has a dark blue background with the following text:

- PUBLISHED 07.12.2018
- # The rationale for a Swiss Citizen Study and Biobank
- NICOLE PROBST-HENSCH
CO-AUTHORS

Below the article title, there are social media sharing buttons: "0 Comments", "1239 Views", "0 Teilen" (Facebook), "0 Twittern" (Twitter), and "0 Sharen" (Google+). A small circular icon with a red and yellow flag is visible on the right side of the page.

A cookie consent banner at the bottom of the page states: "In order to offer you a better user experience, we use cookies. Additional information can be found [here](#)." with an "ACCEPT" button.

The Windows taskbar at the bottom shows the system clock as 21:23 and the language as DE. Open applications include "ProbstHensch_C...", "C:\Users\probst...", and "Swiss Medical ...".



SACR - The Swiss Ageing Citizen Reference

Prof. Dr. Nicole Probst-Hensch

Head Department of Epidemiology and Public Health, Swiss TPH

on behalf of the SACR Team of Coinvestigators:

Prof. Dr. Murielle Bochud (SKIPOGH, Lausanne)

Profs. Dr. Martine Preisig & Peter Vollenweider (PsyCoLaus, Lausanne)

Prof. Dr. Bogdan Draganski (Neurology, CHUV)

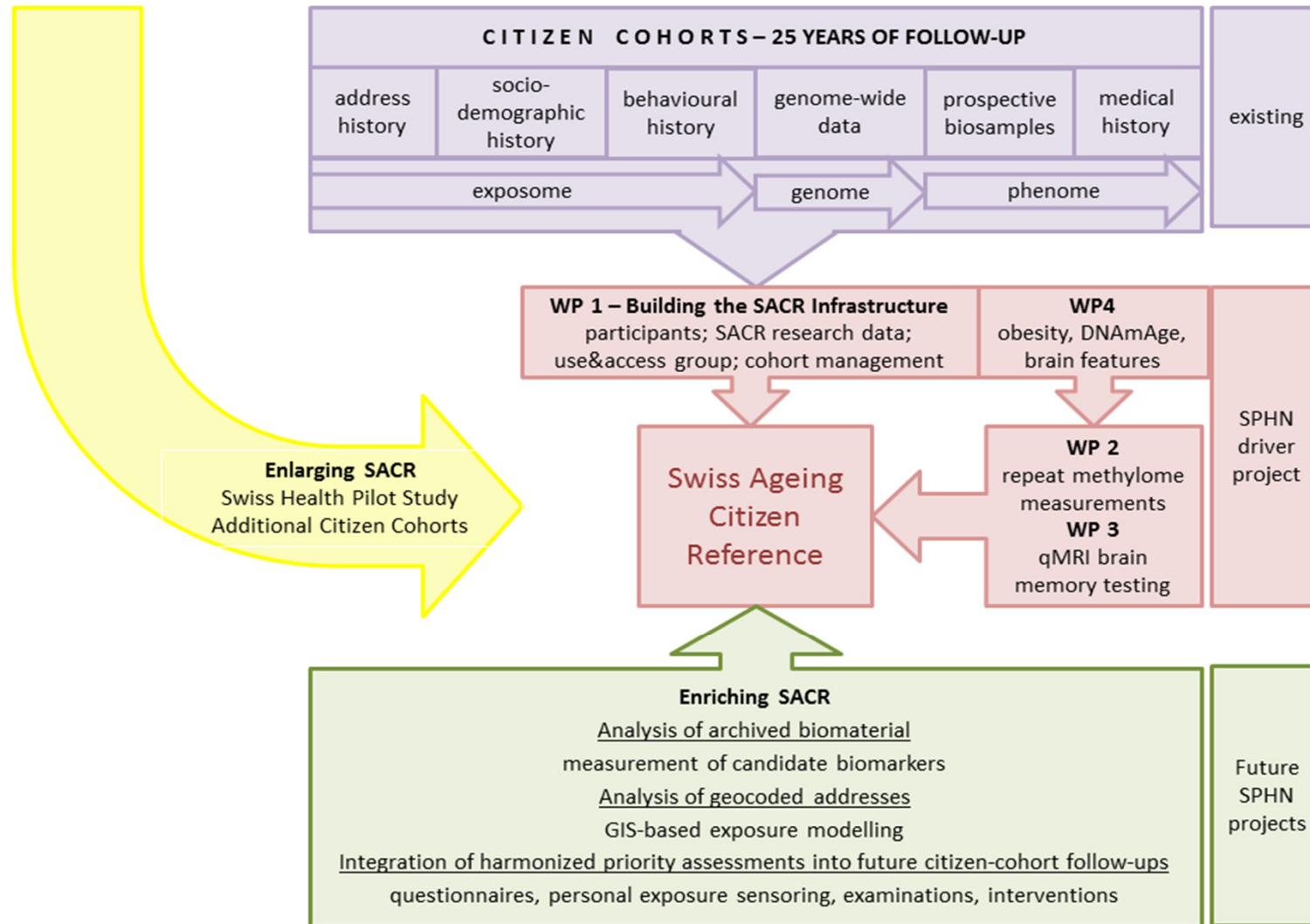
Prof. Dr. Manolis Dermitzakis (Human Genome Center, Geneva)

Dr. Bram Stieltjes (Radiology/Nuclear Medicine, Basel)

Prof. Dr. Andreas Papassotiropoulos (Molecular Neuroscience, Basel)

Prof. Dr. Philippe Cattin (Biomedical Engineering, Basel)

The SACR Paradigm



Acknowledgement Swiss Health Study Team

FOPH – Roland Charriere; Martine Bourqui-Pittet; Réjane Morand-Bourqui; Natalie von Götz

Unisanté - Murielle Bochud; Semira Conseth Nussle; Vincent Faivre; Nolwenn Buhler; Claire Zuppinger; ; Heba Al-Alwan

Murielle & Medea thank you for making collaboration a reality !



Swiss TPH – Medea Imboden; Thomas Vermes; Michael Hegnauer; Paco Cerletti

Swiss Biobanking Platform – Christine Currat; Laurence Chapatte